

GENTRON 950W Series Gasoline Generators

Please read and save this user's manual. Read carefully before attempting to assemble, install, operate or maintain the product described. Protect yourself and others by observing all safety information. Failure to comply with the user's manual could result in personal injury and/or property damage! Retain the user's manual for future reference.



Owner's Manual

CONTENTS

1. SAFETY INFORMATION	2
2. CONTROL FUNCTION	2
3. PRE-OPERATION CHECK	3
4. OPERATION	4
5. PERIODIC MAINTENANCE	5
6. STORAGE	6
7. SPECIFICATIONS	7
8. GENERATOR SCHEME DIAGRAM	8

! WARNING

PLEASE READ AND UNDERSTAND THIS MANUAL COMPLETELY BEFORE OPERATING THE MACHINE.

I SAFETY INFORMATION

EXHAUST FUMES ARE POISONOUS

- Never operate the engine in a closed area or it may cause unconsciousness and death within a short time. Operate the engine in a well ventilated area.

FUEL IS HIGHLY FLAMMABLE AND POISONOUS

- Always turn off the engine when refueling.
- Never refuel while smoking or in the vicinity of an open flame.
- If you swallow any fuel, inhale fuel vapor, or allow any to get in your eyes, see your doctor immediately. If any fuel spills on your skin or clothing, immediately wash with soap and water and change your clothes.
- When operating or transporting the machine, be sure it is kept upright. If it tilts, fuel may leak from the carburetor or fuel tank.

ENGINE AND MUFFLER MAY BE HOT

- Place the machine in a place where pedestrians or children are not likely to touch the machine.
- Avoid placing any flammable materials near the exhaust outlet during operation.
- The machine must be kept away from the buildings and other equipments at least one meter, for it may be overheated.

ELECTRIC SHOCK PREVENTION

- Never operate the engine in rain or snow.
- Never touch the machine with wet hands or electrical shock will occur.
- Be sure to ground (earth) the generator.

NOTE:

Use ground (earth) lead of sufficient current capacity.

Group (earth) Lead
Diameter:0.12mm (0.005in)/ampere
EX: 10Ampere x 1.2(0.055in)

CONNECTION NOTES

- Avoid connecting the generator to commercial power outlet.
- Avoid connecting the generator in parallel with any other generator.

II CONTROL FUNCTION

ENGINE SWITCH

The engine switch controls the ignition system.

① **“ON”**

Ignition circuit is switched on.

The engine can be started.

② **“OFF”**

Ignition circuit is switched off.

The engine will not run.

AC BREAKER (N.F.B)

The AC breaker turns off automatically when the load exceeds the generator rated output. Press the reset button to reset the protector.

CAUTION:

Reduce the load to within specified generator rated output if the AC breaker (N.F.B) turns off.

DC BREAKER (N.F.B)

The DC breaker turns off automatically when the load exceeds the generator rated output.

III PRE-OPERATION CHECK

NOTE:

Pre-operation checks should be made each time when the generator is used.

! WARNING

The engine and muffler will be very hot after the engine has been run. Avoid touching the engine and muffler while they are still hot with any part of your body or clothing during inspection or repair.

FUEL

Make sure there is sufficient fuel in the tank.

Recommended fuel: Oil-mixed gasoline
Fuel tank capacity: 4.2L

- Use oil-mixed gasoline ,or engine will be overheated.Gasoline and oil mixing ration is 50:1 or 40:1(in the summer).
- Use clean,fresh,regular unleaded gasoline with a minimum of 77 octane.
- Use special purpose oil for 2-stroke.

! WARNING

- Fuel is highly flammable. Check “ SAFETY INFORMATION” carefully before refueling.
- Do not fill above the top of the fuel fill or it may overflow when the fuel heats up later and expands. Add fuel until level is approximately 1 inch from top of fuel fill.

After refueling, make sure the tank cap is tightened securely.

GROUNDING

Make sure to ground the generator.

BATTERY

The battery(12V) is charged when the engine is running.

WARNING: Battery electrolyte is poisonous and dangerous, causing severe burns, etc. It contains sulfuric acid. Avoid contacting with skin, eyes or clothing.

Battery produce explosive gases. Keep sparks, flame, cigarettes, etc. away. Ventilate when charging or using in closed space. Always cover eyes when working near batteries. Keep out of reach of children.

IV OPERATION


STARTING THE ENGINE

NOTE:

- Before starting the engine, do not connect the electric apparatus.

I Turn the fuel cock lever to “ON”.

II Turn the engine switch to “ON”.

III Turn the choke lever to the “” position. The choke is not required to start a warm engine.

IV Pull slowly on the recoil starter until it is engaged, then pull it briskly. Take your hand off the recoil starter immediately after the engine starts.

V Warm up the engine. Move choke lever toward the operating position a short distance at a time over several seconds in warm weather or minutes in cold weather. Let engine run smoothly before each change.

VI Turn the choke lever back to the operating position.

CONNECTION

AC OUTPUT

CAUTION :

- Be sure the electric apparatus is turned off before plugging in.
 - Be sure the total load is within generator rated output.
 - Be sure the socket load current is within socket rated current.
- I Wind the power lead 2 or 3 turns around frame.
 - II Start the engine.
 - III Plug into AC socket.
 - IV Make sure the pilot light is on.
 - V Turn on the electric apparatus.
- Reduce the load to within specified generator rated output if the AC breaker (N.F.B.) turns off.

DC OUTPUT

NOTE :

Battery charging(if equipped).
Red lead to positive(+),black to negative(-).

CAUTION :

This battery charging system is intended to recharge weak batteries,not to “BOOST START” vehicles.Before charging a storage battery,please read the battery in the user’s manual.

STOPPING THE ENGINE.

NOTE :

- Turn off the electric apparatus.
- I Disconnect the electric apparatus.
 - II Turn the engine switch to “OFF”.
 - III Turn the fuel cock lever to “OFF”.

V PERIODIC MAINTENANCE

MAINTENANCE CHART

Regular maintenance is most important for the best performance and safe operation.

Item	remarks	Pre-Operati -on check (daily)	Initial 1 month or 20 Hr	Every 3 months or 50 Hr	Every 6 months or 100Hr	Every 12 months or 300Hr
Spark Plug	Check condition adjust gap and clean. Replace if necessary.			●		
Air Filter	Clean. Replace if necessary.			●		
Fuel Filter	Clean fuel filter.Re-Place if necessary.				●	
Fuel Line	Check fuel hose for crack or damage Re- place if necessary.	●				
Exhaust System	Check for leakage Retighten or replace gasket if necessary	●				
	Check muffler screen.				●	
Carburetor	Check choke operation.	●				
Cooling system	Check fan damage.					●
Starting system	Check recoil starter operation.	●				
Decarbonization	Clean more frequently if necessary,					●
Fittings/Fasteners	Check all fittings and fasteners correct if necessary.				●	

AIR FILTER

CAUTION:

- Do not wring out the element. This could cause it to tear.
- Be sure the element sealing surface matches the air filter so there is no air leak.
- The engine should never run without the element sealing, excessive piston and or cylinder wear may result.

! WARNING

Never refuel while smoke or in the vicinity of an open flame.

SPARK PLUG INSPECTION

Standard electrode color : Tan Color

Spark Plug Gap:0.7-0.8mm(0.028-0.031in)

FUEL TANK FILTER

- ① Clean with solvent.
- ② Wipe off.

! WARNING

Be sure the tank cap is tightened securely.

TROUBLESHOOTING

ENGINE WON'T START

1. Fuel systems

No fuel supplied to combustion chamber.

- No fuel in tank...Supply fuel.
- Clogged fuel line...Clean fuel line.
- Foreign matter in fuel cock...Clean fuel cock.
- Clogged carburetor...Clean carburetor.

2. Electrical systems

Poor spark

- Spark plug dirty with carbon or wet...Remove carbon or wipe spark plug insufficient.
- Faulty ignition system...Consult dealer.

3.Compression insufficient

- Worn out piston and cylinder...Consult dealer.
- Loose cylinder head nuts...Tighten nuts properly.

VI STORAGE

Long term storage of your machine will require some preventive procedures to guard against deterioration.

DRAIN THE FUEL

Drain the fuel tank, fuel cock, and carburetor float bowl.

ENGINE

I Pour in about one tablespoon of SAE 10W30 or 20W40 motor oil through the spark plug hole.

II Use the recoil starter to turn the engine over several times (with ignition off).

III Pull the recoil starter until you feel compression.

IV Stop pulling.

V Clean exterior of the generator and apply a rust inhibitor.

VI Store the generator in a dry, well-ventilated place, with the cover place over it.

VII The generator must remain in a horizontal position.

VII SPECIFICATION

DIMENSIONS :

DIMENSIONS	GENTRON 950W
Overall Length (mm)	370
Overall Wide (mm)	310
Overall Height (mm)	320
Dry Weight (kg)	21

GENERATOR :

Model	GENTRON 950W
Type	Single phase, brushless
Peak power(Kw)	0.95
Rate output (Kw)	0.85
Rated speed (rpm)	3600
AC Rated voltage(V)	115
AC Rated current(A)	6.5
Rated frequency(Hz)	60
Power factor COSφ	1.0

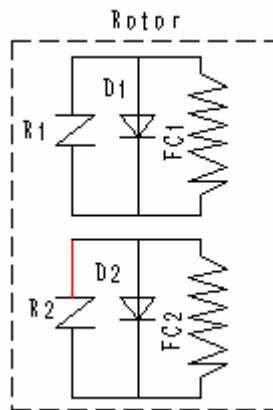
DC Rated voltage (V)	12
DC Rated current(A)	15

ENGINE:

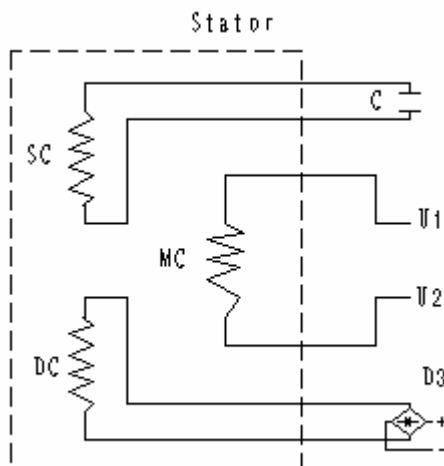
ENGINE	LY1E45FD
Type	single cylinder,2-stroke, forced air cooling
Bore×Stroke (mm)	45×40
Displacement(mL)	63
Compression Ratio	7.4:1
Max. output(Kw/rpm)	1.47/4000
Lubricate	Mixed oil brume lubrication
Fuel No	90# gasoline
Oil No	Purpose oil for 2-stroke
Starting	Manual starting
Output Mode	Horizontal cone-shaped shaft output
Ignition	C.D.I

- Specifications subject to change without prior notice.

VIII GENERATOR SCHEME DLGRAM



- R1 > Over Volt Protective
- R2 > Resistance
- D1 > Spin Rectifier
- D2 > Spin Rectifier
- FC1 > Rotor Pole Winding
- FC2 > Rotor Pole Winding



- DC — Stator DC Winding
- C — Capacitor
- MC — Stator Main Winding
- D3 — Single-phase Rectifier

SC — Stator Auxiliary Winding